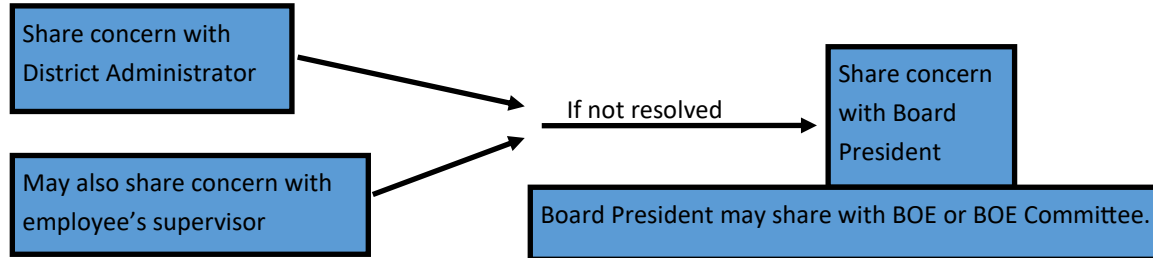
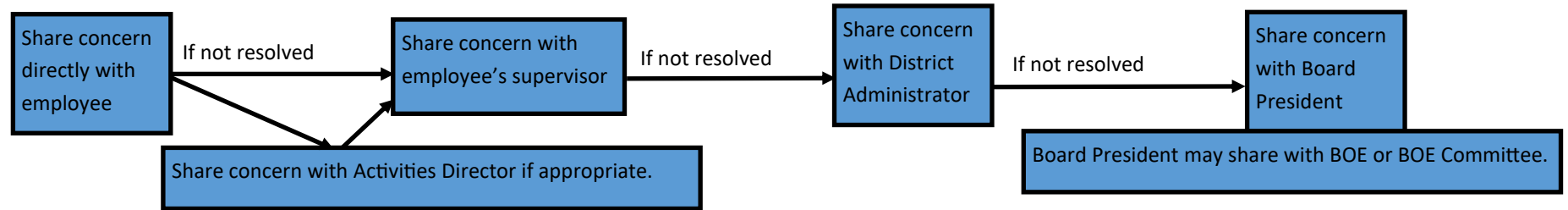


School District of Baraboo Communication Flowchart Regarding Personnel Matters

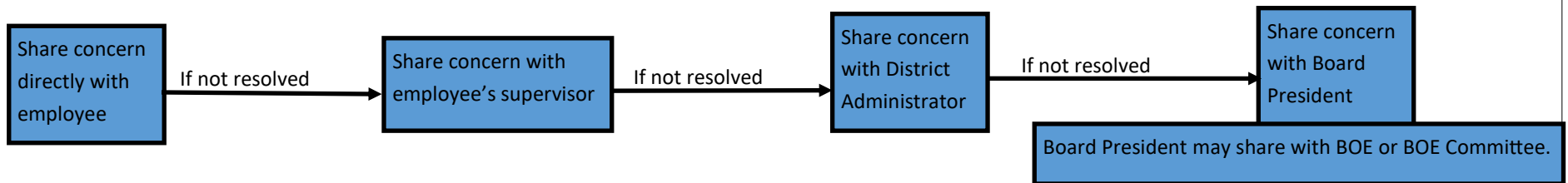
School Board Member Concern Regarding a Teacher, Coach or Other Employee:



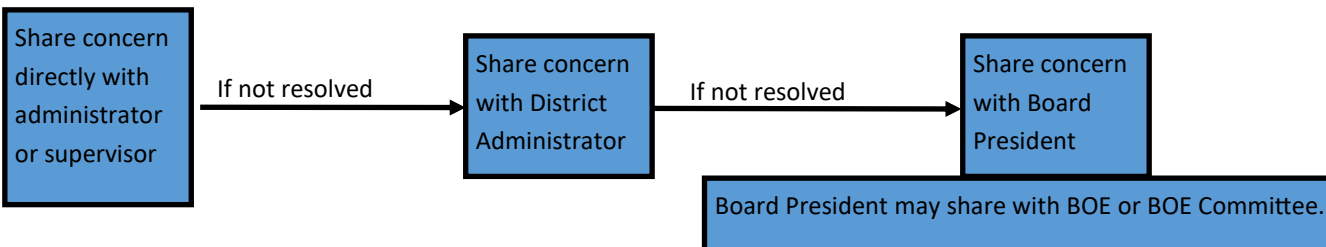
Parent/Community Concern Regarding a Teacher, Coach or Other Employee:



Employee Concern Regarding Another Employee:



Employee Concern Regarding Administrator/Supervisor:



Excludes discrimination, harassment and bullying complaints. See, e.g. Board Policy 511-Rule. The process outlined here shall not be interpreted as replacing or limiting employees; rights under the employee grievance procedure. See Board Policy 527-Rule.